

# THE MESSENGER

Arendahl | Grace | North Prairie | Pilot Mound

**REMEMBER IN YOUR PRAYERS  
THE FOLLOWING PEOPLE  
AND THEIR FAMILIES:** That  
we at United Lutheran Parish  
may be open to God's will,  
strength and healing for...

- **Health:** Marlo Boyum, Harold and Arlene Jensen, Tom Haugstad, Dean McConochie (lives in California), Nancey Gathje, Emily Charlebois, Janine Lange, Jessie Arnold, Allan Kingsbury, Ardis Wilcox, Michelle Pelyz, Tina Mayer and family...
- **On Going Health Concerns:** Tom Haugstad.
- **Homebound:** Lyle Bremmer, Arlene Holtegaard...
- **Assisted Living and Care Centers:** Barb Holien, Marlow Boyum, O'Donna Haugstad, Ruth Black, Harold and Arlene Jensen.
- **Our Military:** Tom Moen, Jon Wiley (Bev Klinski grandson-in-law), Dustin Willcox (grandson of Bob & Ardis Willcox), Dakota Winkelman (nephew of Tom & Deb Haugstad) and their families.



**S**ummer is a season for growth. The plants appear to stretch their stalk overnight with outstretched leaves reaching for the sun, as the saying goes, "Knee high by the Fourth of July". Last summer I was totally astounded when Confirmation Youth returned to assist in worship. It seemed like some of them grew 6 inches, if not a foot, in a couple of months. And for those who plant vegetables they will be harvesting their bounty of veggies in the next month. However, physical growth is not the only type of growth that happens during the summer months.

Every year the Walker side of my family would have a family reunion on the farm. All my aunts and uncles, cousins and their families, friends, and neighbors would gather to feast on a variety of food. I especially remember the home grown Illinois sweet corn cooked on the grill and dipped a huge vat of melted butter. We would catch up where our lives had been lately. It was good for us to reconnect.

God created humankind to be in relationship with one another. My hope is that during these next two months you are able to connect with your extended families, friends, and neighbors. May you find joy, laughter, and spiritual growth when you gather with others. It is the vitamin throughout life with God being at the center of all.

In Joy and Christ's love,

Pastor Sarah



Pastor Sarah's at "Dusk" ZOOM  
BOOK CLUB LIST

Thursday, 7:00 pm - 8:00 pm

Please email me if you are  
interested at  
[sarahjwalkerbrown@gmail.com](mailto:sarahjwalkerbrown@gmail.com) and  
I will email you the ZOOM link.

7/27 - **1776** by DAVID  
MCCULLOUGH

8/24 - **OLGA DIES**  
**DREAMING** by XOCHITL  
GONZALEZ

9/28 - **Educated** by TARA  
WESTOVER

10/26 - **The Story of Arthur**  
**Truluv** by Elizabeth Berg

11/30 - **A Lesson Before Dying**  
by Ernest J. Gaines

12/21 - **THE RECKLESS OATH**  
**WE MADE** by BRYN  
GREENWOOD

\*\*\*\*\*



Fjaerland Reunion

August 6th

Following Worship at Arendahl

Downtown Peterson Park

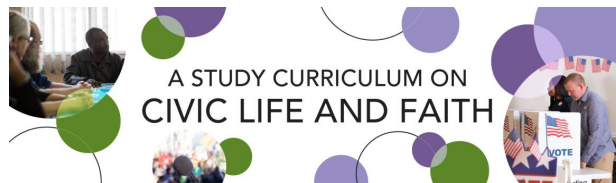


Dear Grace Lutheran Church,

Thank you so much for your generous gift of money that I used for the mission trip I took to the Middle East. I really appreciate it and am very grateful too. It was a very generous of you. It was a trip of a lifetime. It was interesting to speak with Muslim people my age about Christianity. It was very rewarding.

Sincerely, Olivia

\*\*\*\*\*



### About

The ELCA Task Force on Studies for Civic Life and Faith has released a study curriculum for use throughout our church. In providing this study curriculum and soliciting feedback, the task force invites you to join a conversation about religious liberty, the proper role of the church in relation to government, and many other critical topics. A response form after each session lets participants communicate with the task force itself on the material covered.

The preparation of this study is part of the process toward developing a social statement on these many topics related to civic life and faith. Participants' feedback is key in helping the task force as it moves into the next phase of its work, drafting a social statement. The study response period is open through Oct. 15.

The curriculum has six sessions. The first is a core introduction, and the following sessions can be done in any order according to the interests of the group. Each session comes ready to use, with a teaching video, prayers, hymn suggestions, Scriptures, group discussion questions, suggested resources, and case studies taken from everyday life. **Please refer to page4 for your invitation to participate in the study.**



On June 18th Tina Mayer's mother was received into the arms of God's mercy, into the blessed rest of everlasting peace, and into the glorious company of saints in light.

Christine Dorothy Meihak  
Peepgrass

March 13, 1940 - June 18, 2023

Littleton , Colorado

\*\*\*\*\*

The United Lutheran  
Parish Confirmation Youth  
participated in

Southeastern Minnesota  
Synod The 2023 Lent  
Initiative: 40 Together

Monetary offering  
received was **\$700!**

Thank you to all who  
attended the Mid-Week  
Lenten Worship Services  
and gave generously from  
your heart.

The monies are used for  
the accompaniment of our  
siblings in Christ in  
Tanzania, Colombia, the  
U.S./Mexico borderlands,  
and our local South  
Sudanese communities.

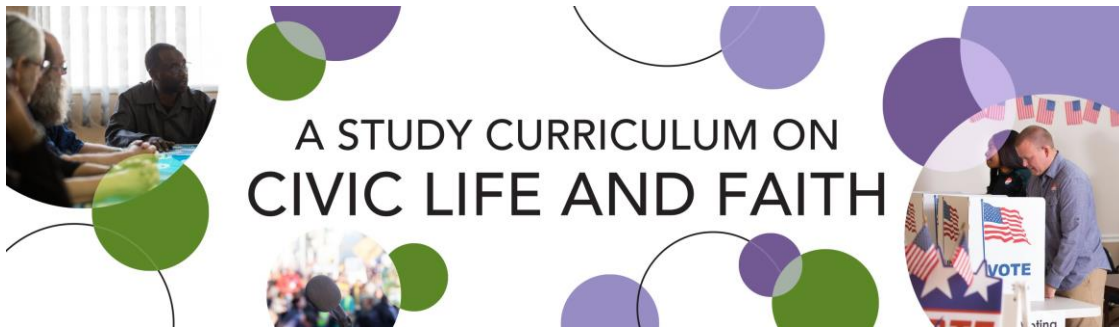


Summertime is a season with a different rhythm than all other seasons. We find ourselves attending lots more events like graduation, anniversary, and birthday celebrations. One such event was the June Birthday Celebration at Good Shepherd Nursing Home in Rushford, MN where our Eighth Grade Confirmation Youth, Camdyn Rye, shared her musical talent with the June Birthday residents. Smiles and applause were overflowing after each musical arrangement that she played.

**On Tuesday May 23rd** at North Prairie Lutheran Church thirty people attended the meeting regarding questions and concerns about ELCA stance on hot button issues. Bishop Regina Hassanally and the Assistant to the Bishop, Reverend Matthew Larson of Southeastern Minnesota Synod were present to hear the concerns of the people. Those that were present expressed their views very candidly in a loving and trusting environment. The issues that were discussed included:

- the gender language used for God
- a person's sexual orientation or gender identity (LGBTQI)
- the United Lutheran Parish Agreement stipulating that a gay person would not be allowed to preach at the four churches
- questioning ELCA's abortion stance
- choice of who we lift up in prayers

Voices were heard, concerns were heard, and reflection continues. It was a healthy discussion.



You are invited to  
North Prairie Lutheran Church  
to participate in a six session study curriculum  
on Civic Life and Faith.

All faith communities within the Root River  
Conference are invited, as well.

We will begin on Saturday August 19th at  
9:00am - 10:00am.

*All future Saturday dates will be discussed on August 19th.*

Please contact Pastor Sarah Walker Brown to  
reserve your seat at  
[sarahjwalkerbrown@gmail.com](mailto:sarahjwalkerbrown@gmail.com)

Look forward to seeing Y'All!

# God's Superheroes!



**Sunday, July 30<sup>th</sup>**  
**10:30 am to 3 pm**  
**At North Prairie Lutheran Church**



We will start after the Children's Message during church service at 10:30. Lunch will be provided. We'll have a fun day of crafts and games ending at 3 pm.

Open to all ULP children ages Preschool (completed) through 6<sup>th</sup> Grade (completed). Cost is free.

Friends are welcome to come as well!

Please RSVP to Andrea Woxland: [aawoxland@outlook.com](mailto:aawoxland@outlook.com)  
or 507-429-8097.

Deadline to sign up is 7/25/23.

I can do all things through Christ who  
strengthens me. ~Philippians 4:13



# PILOT MOUND LUTHERAN CHURCH CHATFIELD



\*\*\*\* 48th \*\*\*\*

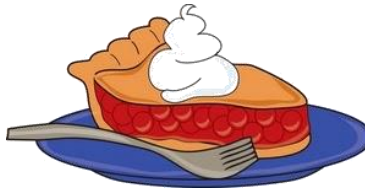


## ICE CREAM SOCIAL

FEATURING THE CHATFIELD  
BRASS BAND  
SUNDAY, JULY 16, 2023

SERVING @ 6:00pm

MUSIC @ 7:00pm



BARBECUES, PIES, ICE CREAM,  
POP AND COFFEE WILL BE SERVED

~~~ PLEASE BRING YOU LAWN CHAIRS ~~~



## **North Prairie WELCA Announcements for JULY- AUGUST, 2023**

Please join up for **QUILTING DAYS** - ALL are welcome to come and participate in this mission in ministry. If you have questions, contact Diane.

**JULY --**

Tuesday, July 11<sup>th</sup> - 6:00 pm

Wednesday, July 12<sup>th</sup> - 9:00 am  
(potluck)

**AUGUST --**

Tuesday, Aug 8<sup>th</sup> - 6:00 pm

Wednesday, Aug 9<sup>th</sup> - 9:00 am (potluck)



**NEXT WELCA Meeting**

Sunday, Aug 13<sup>th</sup> - 9:30 am WELCA meeting prior to worship;

Devotions - Circle # 2 - Priscilla

**STEWARDSHIP GOALS for 2023:**

Mission Quilts (locally and LWR) Quilting Days - months of July - November

School Kits (LWR) Collection thru Oct 1<sup>st</sup>

**PARAMENTS for May/Jun/Jul/Aug:** Gayle Burdick, Twilah Brown

**BULLETIN BOARD for May/Jun/Jul/Aug:** Circle # 2- Priscilla



The "WELCA YEARBOOKS" are available. Please contact President Diane if you do not have one. Please give any corrections or additions to Diane to keep info up-to-date.



Our NP WELCA will be holding a **“BAKE SALE”** on **Sunday, August 27<sup>th</sup>** in conjunction with the ULP hosted **“BRAD BOICE”** concert in the North Prairie Pavilion.



Money raised from this

bake sale will go towards the purchase of materials to build a ‘Bell Tower’ which will be placed near the pavilion. Everyone is encouraged to participate. If you have any questions, please contact Diane Drinkall.

### Upcoming events for WELCA include:

July 11<sup>th</sup>--12<sup>th</sup> Tue, 6:00 pm & Wed, 9:00 am Quilting Days

Aug 8<sup>th</sup> - 9<sup>th</sup> Tue, 6:00 pm & Wed, 9:00 am Quilting Days

Aug 13<sup>th</sup> - Sun, 9:30 am NP WELCA Meeting, prior to worship;  
Devotions, Priscilla Circle # 2

Aug 28<sup>th</sup> - 2:00 pm Brad Boice Concert, North Prairie Pavilion by ULP.  
WELCA will have Bake Sale

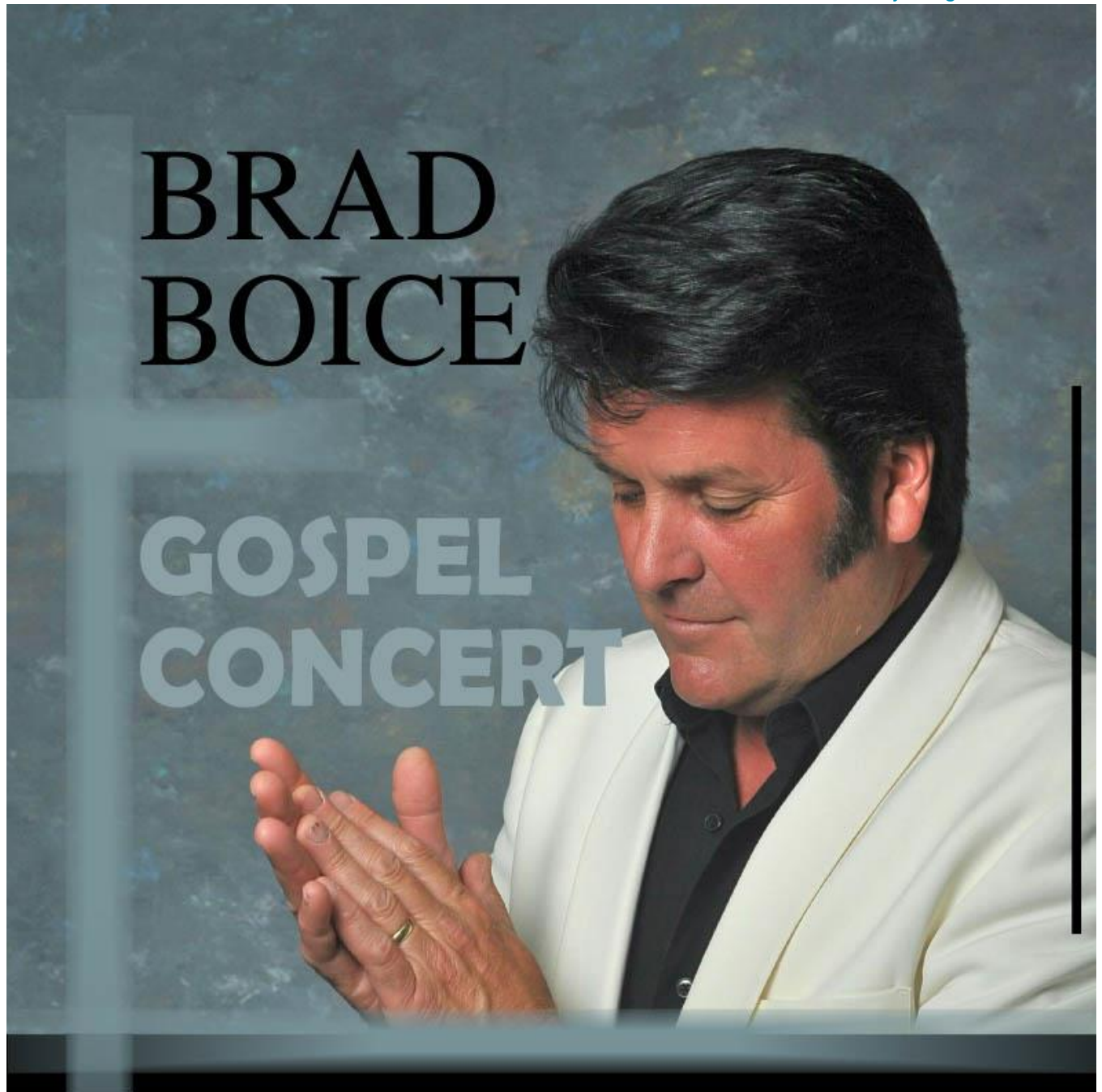
### SEPTEMBER, 2023

Our FALL FUNDRAISER has not been determined as the time of this printing. If you have any ideas, please let Diane or one of the fundraising committee members know. Please stay tuned.

**Please add these dates to your calendar.** Your participation makes for a great opportunity to volunteer and support the work of our Women of the ELCA at North Prairie.

Looking forward to working with YOU during 2023. To streamline communications for WELCA with e-mail, text, and/or calls and to cut costs for postage and paper, please forward your e-mail address and phone #s to WELCA President Diane Drinkall: 507.459.1776 or [dedrinkall@hotmail.com](mailto:dedrinkall@hotmail.com)





UNITED LUTHERAN PARISH IS HOSTING  
BRAD BOICE GOSPEL CONCERT  
AT NORTH PRAIRIE LUTHEAN CHURCH PAVILION  
35957 HWY. 30, RURAL LANESBORO, MN  
SUNDAY, AUGUST 27th AT 2:00 PM

PLEASE BRING A LAWN CHAIR FOR SEATING.  
FREE WILL OFFERING FOR THE CONCERT WILL BE TAKEN.  
REFRESHMENTS FOLLOWING.

# **GRACE WELCA - JULY 2023**

## **QUILTING**

**Wednesday, July 12 9:00AM**

**Wednesday, July 26 9:00AM**

Everyone is welcome to join the Quilters!

## **MONTHLY MEETING**

**Thursday, July 20 2:00PM**

*Bible Study will be Ephesians 4:26. "Don't sin by letting anger control you"*

Servers: Kathy Hallum and Carol Ramsey.

**no August Welca meeting**

## **SUPPER & SONG EVENT**

**Sunday, August 13th**

**6:00 PM Supper**

**7:00 PM Program**

Chairs for this event are Rhonda Bauer and Sally Poepping.

The menu for supper is yet to be determined.

Performing Entertainment by "Sister Luv" from Spring Valley.

***Please invite your family and friends to this event!***

**2022 WELCA Officers: Co-Presidents – Val Hasleiet, Susie Norby**

**Secretary – Karen Thompson    Treasurer – Kathy Hallum**

*WELCA is our church organization for all women members.*

*Everyone is invited and encouraged to participate in WELCA activities!*



# Grace Lutheran Church WELCA SUPPER & SONG

Please join  
us for food  
and fun!



## Sunday, August 13

6:00PM – Supper

7:00PM – Music

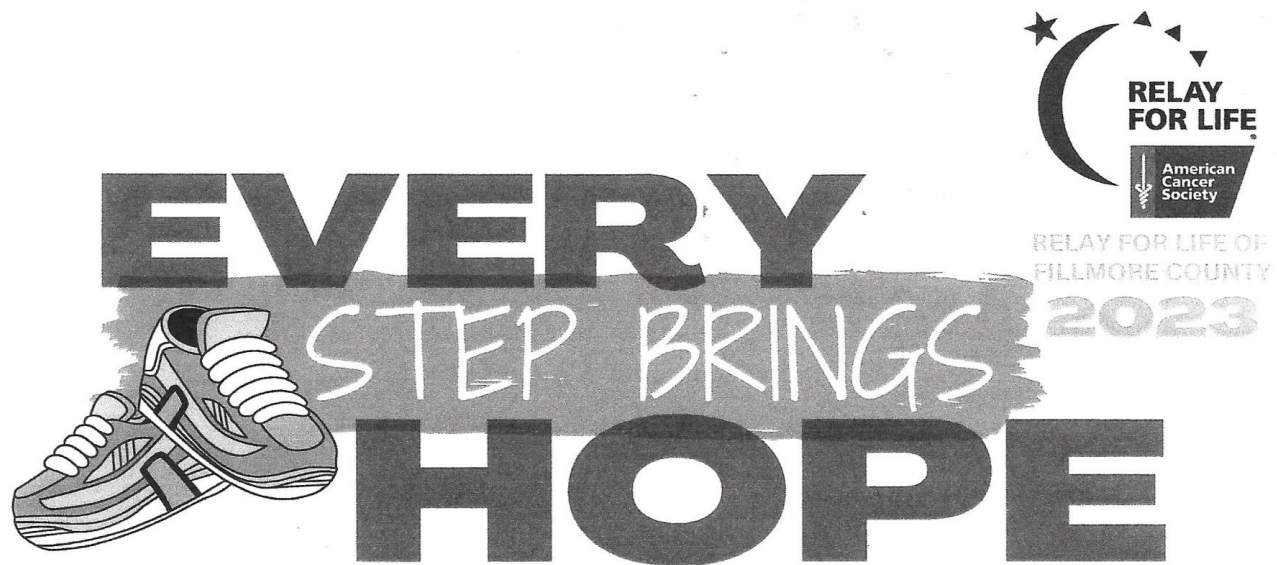
We have some exciting entertainment lined up for your enjoyment this year!  
We hope to see many of you there!

Grace Lutheran Church

365 Park Street Peterson, MN

(Air Conditioned and Accessible to all)






## 2023 RELAY FOR LIFE


### Fountain COMMUNITY CENTER

**FRIDAY,  
July 28<sup>TH</sup> 2023**  
3:00PM - 11:00PM

#### SCHEDULE OF EVENTS

|              |                    |
|--------------|--------------------|
| 3:00p        | Survivor Tea       |
| 5:00p-7:00p  | Community Supper   |
| 5:00p-9:30p  | Silent Auction     |
| 6:00p        | Opening Ceremony   |
| 6:00-10:00p  | Walk the Track     |
| 8:00p        | Luminaria Lighting |
| 10:00-11:00p | Bingo              |
| 11:00pm      | Closing Ceremony   |

 Relay For Life of Fillmore County

 800.227.2345



Lanesboro Arts is thrilled to announce the 2023 line-up of popular outdoor summer music series Rhythms on the Root. The series activates the vibrant asset of Gateway Park as a place for the Lanesboro community and visitors to gather and celebrate with live music. The series offers an infectious range of music including indie rock, dream pop, and alternative country from regionally acclaimed bands General B and the Wiz, Sleeping Jesus, and Faith Boblett.

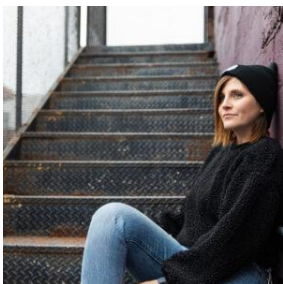
The concerts will take place from 6:00 – 7:30 p.m. on the second Saturday of every month June through August. Tickets are on-sale now and are \$20 General Admission and \$15 Lanesboro Arts Members (free for youth age 12 and under, but ticket still required).

**Saturday, July 8<sup>th</sup>, 6:00 – 7:30 pm: [Sleeping Jesus](#)**



Sleeping Jesus is the dream project started by Nick Elstad in Winona, Minnesota. Today, this band also features Tyler Steinley, Andy Bauer, Seamus St. Clair, and Dante DeGrazia. Throughout the pandemic, the band began to find their own voice as they split time between Winona, Minneapolis, Milwaukee, and Northfield. In 2016, *Perennial* was released as their debut, and their most recent album was *Leave the Party Early*, which contains nine different songs. The band has now played their indie and dream pop music across the nation as they have continued to release new music.

**Saturday, August 12<sup>th</sup>, 6:00 – 7:30 pm: [Faith Boblett](#)**



Faith Boblett is a singer-songwriter based in Minneapolis who has roots in various musical genres. In 2018, she was named one of the Best New Bands by First Avenue. Most popularly, two of the songs on her third LP—"Ugly Things" and "Didn't Want You"—received regular airplay on Minnesota Public Radio's The Current. Drawing inspiration from Tom Petty and Brandi Carlile, her songs feature a variety of pop, Americana, alternative country, rock, and more! Though creating music has been an important part of her life since she was a teenager, today, Faith Boblett is creating timeless songs by finding her own distinctive voice.



## **STEWARDSHIP SERVICE PROJECT**

July-August-September stewardship project will focus on providing “SCHOOL KITS” for Lutheran World Relief. We invite all individuals and families in our community to participate. Arendahl and North Prairie WELCAs will collect and deliver to LWR drop off sites in-October. YOU CAN CHOOSE to assemble any of these kits throughout the year and/or give a monetary donation to help with shipping cost overseas.



Education is important to every community, especially where poverty or disaster has limited the options for young people to reach their potential. School Kits contain essential supplies to help children - and in some cases adults - continue learning despite the hardships they face. That learning leads to a better life for them, their families and their communities.

- **EVERYONE IS WELCOME TO DONATE. KITS WILL BE SHIPPED IN OCTOBER.** Items need to be at the churches by SUNDAY, October 1<sup>st</sup> for packing in boxes.

Box drop off will be Saturday, October 7<sup>th</sup>, 7 am - 11 am, LaCrosse Train Station.

Include the following items in each School Kit:

- 4 - 70 sheet notebooks of wide- or college-ruled paper; No loose-leaf paper
- 1 - 30-centimeter ruler, or a ruler with centimeters on one side and inches on the other
- 1 pencil sharpener
- 1 pair of blunt scissors (safety scissors with embedded steel blades works well)
- 5 unsharpened # 2 pencils with erasers, secure together with a rubber band
- 5 black or blue ballpoint pens (no gel ink); secure together with a rubber band
- 1 box of 16 or 24 crayons
- 1 - 2 ½" eraser
- (NP and ARENDAHL have some extra drawstring bags from last year) -----  
1 sturdy drawstring backpack-style cloth bag approximately 14"x17" with shoulder straps no standard backpacks); recommended fabrics include sturdy cotton, canvas, denim, and twill.

Do not add other items or leave out any of the items listed. All items should be new and in good condition. Remove any excess packaging, pack all items in bag and close. Do not enclose the Kit or any of its contents in plastic bags.

**PLEASE DO NOT DONATE ANY ITEMS:** with any religious symbols, messages, your congregation's name, business names, items decorated with a U.S. flag, patriotic or military symbols, or references to the armed forces, including camouflage.

SHARING GIFTS OF EXTRAORDINARY LOVE - Pens and pencils, a toothbrush, a quilt...ordinary items we take for granted become treasures in the hands of their recipients. The items you send will be cherished and used by people who take nothing for granted, for whom even a simple bar of new soap is special.

Your gift of time and resources are beautiful expressions of God's love and grace to those in greatest need. Thank you for your partnership in putting them together.



## SUPPORT OUR LOCAL FOOD SHELVES

Children and families still need our support and donations. We have a cart located in the entryway of North Prairie church. Whatever you donate, whether it be just one item or several, we can make a difference in the lives of many.



Please join us in doing what we can to make sure families in need don't go to bed hungry. Items will be delivered at the end of each

month to the local food shelf.

### WELCA

Cash Donations to local food shelves are encouraged at this time. Checks can be mailed to: SEMCAC Rushford Food Shelf 113 E Jessie St, PO Box 549 Rushford MN 55971 (OR a local food shelf where you live).



AS WE CONTINUE TO KEEP OUR MEMBERSHIP LIST CURRENT, PLEASE CONTACT US WITH ADDRESS CHANGES or if you are a member of another church or do not wish to remain a member at Arendahl, Grace, North Prairie or Pilot Mound, let us know so your name can be removed from our membership and mailing address lists.

You can contact us via email: [united\\_lutheran@yahoo.com](mailto:united_lutheran@yahoo.com) or contact our church secretaries for:

ARENDAHL and GRACE at: [secretaryglc@goacentek.net](mailto:secretaryglc@goacentek.net) or leave a message at the church office at 507.875.2218

NORTH PRAIRIE and PILOT MOUND at: [holte@acegroup.cc](mailto:holte@acegroup.cc) or leave a message at cell phone 507.696.0725 or the church office at 507.875.2460. Thank you in advance for helping to keep the membership at UNITED LUTHERAN PARISH up-to-date!



Please check our Facebook pages and the website - [www.unitedlutheranparish.com](http://www.unitedlutheranparish.com) for updates as we continue to move forward.

## The Wholeness Wheel



“This life, therefore, is not godliness but the process of becoming godly, not health but getting well, not being but becoming, not rest but exercise. We are not now what we shall be, but we are on the way.”

– Martin Luther

We can't be “whole” in this life, but we can become acquainted with the wholeness to come by striving to live well in key aspects of our lives. The Wholeness Wheel is a tool we use to understand whole-person well-being.

## Spiritual well-being

Living a centered life focused on God affects each aspect of our well-being. Jesus came that we might have abundant life (John 10:10), which flows from the promise we receive in baptism that Christ makes us a new creation (2 Cor. 5:17). Explore who you are and know whose you are as you nurture your spiritual well-being through prayer, devotions, worship, nature, art, and music.

## Social well-being

We are created by God to be connected beings, living in community and instructed to help and love each other. We maintain social well-being through interaction, play, and forgiveness. Take time to nurture your relationships with family, friends, congregation, and coworkers.

## Emotional well-being

Being emotionally well means feeling the full range of human emotions and expressing them appropriately. Self-awareness is the first step. Recognizing and honoring your own feelings and those of others — stress, contentment, anger, love, sadness, joy, resentment — will help you live life with resilience.

## Physical well-being

While we are not all born perfectly healthy or able to live life without injury or illness, we can live physically well by tending and nurturing our body as a gift from God. Give thanks for what it is able to do for you, and care for it as you feed it healthy foods, keep it hydrated, build physical endurance through regular exercise, and respect your body's need for rest.

## Financial well-being

Being financially well involves making decisions based on our values, as reflected in the way we save, spend, and share. Tending to one's financial well-being in this way requires us to be intentional, generous, and focused on sustainability.

## Vocational well-being

We all have a calling — a vocation — to follow Christ's example by living a life of meaning, purpose, and service to our neighbor. Our vocations make up our life's work and passions — they are the everyday roles through which God calls us to help make this world a better place. Those who are vocationally well are faithful stewards of their talents and abilities, and find opportunities to build and use them.

## Intellectual well-being

Using our minds keeps us alert and active. Bolster your intellectual well-being as you stay curious, ask questions, and seek answers. Explore new responsibilities, experience new things, and keep an open mind. And remember, knowing when and how to let your mind rest is as important as keeping it active.

## Whole-person well-being

Notice how the different spaces are centered in our spiritual identity and that all elements contribute to whole-person well-being. Like a wheel on a wagon, each part is interconnected and vital: hub, spokes, outer circle.

## Lord of abundant life,

we give you thanks for the waters of baptism and the ways in which you make all things new.  
Create newness in us and guide us toward lives of wholeness and peace. Amen.

**Dear Lord, please keep us all in your tender loving care and Lord let us know you are there for us in time of distress or need. Amen**





## UNITED LUTHERAN PARISH

### Birthdays and Wedding Anniversaries

#### **ARENDAHL**

##### ***Birthdays***

05-James Knudsen  
09-Dana Knudsen  
16-Amelia Whitacre  
16-Henrik Whitacre  
17-Allen Aarsvold  
23-Chris Goldsmith

##### ***Anniversaries***

12-Dennis & Edna Gravos

#### **GRACE**

##### ***Birthdays***

01-Rick Olson  
01-Vicky Quimby  
03-Deb Book  
03-Larry Pelzl  
10-Emily Didier  
12-Michele Pelzl  
13-Hayley Boyum  
13-Jon Graham  
13-Chad Kingsbury  
16-David Hallum  
19-Jane Holien  
20-Jessica Thompson  
23-Claire Gorder  
28-Rhonda Bauer  
29-Ruth Black  
29-Erica Klein  
30-Barb Thompson  
31-Kim Hallum

##### ***Anniversaries***

01-John & Jenny Kahoun  
07-Maynard & Sandy Thompson  
13-Jim & Jane Holien  
15-Chad & Stephanie Kingsbury  
24-Tom & Danielle Paulson  
28-Stan & Nancy Agrimson

#### **NORTH PRAIRIE**

##### ***Birthdays***

01-Anna Vick  
02-Kailan Schott  
03-Diane Eide  
04-Derek Holtegaard  
05-Sommer Holtegaard  
09-Grant Horihan  
09-Tatum Olson  
11-Thor Mosdal  
12-Wayne Highum  
14-Kelly Connaughty  
15-Tessa Holtegaard  
16-Kim Wilde  
18-Griffin Holtegaard  
18-Meghan Moger  
20-Camdyn Rye  
22-Stephanie Drinkall  
23-Paula Haug  
27-Elisa Edwards  
30-Craig Bain  
31-Lisa Koljord

##### ***Anniversaries***

01-Darin & Nancy Hegland  
15-Nathan & Becky Olson  
21-Brent & Michelle Olson  
31-Charles & Lindsay Horihan

#### **PILOT MOUND**

##### ***Birthdays***

01-Annora Kramer  
02-Grace Goddard  
02-Kaylee Rockvam  
05-Amanda Stevens  
09-Paisley Lawstuen  
13-Heather Luehmann  
14-David Schaefer  
15-Timothy Goddard  
15-Alyssa Luehmann  
15-Anastasia Hongerholt  
16-Joe McCabe  
19-Clay Peterson  
25-Katelyn Burt  
26-Deb Erickson  
31-Duane Erickson

##### ***Anniversaries***

28-Brian & Laci Nelson

The Birthday/Anniversary lists are not complete.  
Please help us keep accurate lists of these special days for our members

Any updates/corrections should be sent to [united\\_lutheran@yahoo.com](mailto:united_lutheran@yahoo.com)



## UNITED LUTHERAN PARISH

### Birthdays and Wedding Anniversaries

#### **ARENDAHL**

##### ***Birthdays***

##### ***Anniversaries***

08-Jacob & Andrea Pauly

#### **GRACE**

##### ***Birthdays***

03-Nancy Agrimson

04-Bob Holien

05-Bev Klinski

06-Donna Olson

12-Jeff Thompson

14-Melissa Hall

15-Mark Hallum

15-Sue Holien

17-Brad Thompson

20-Debbie Brink

20-Bailey Holien

21-Larry Malmin

23-Stanley Agrimson

26-Stan Gudmundson

26-Chuck Eidenschink

29-Arlene Grimes

29-Melissa Keenan

30-Sarah Brown

30-Paul Grimes

##### ***Anniversaries***

03-George & Judy Graham

03-Brian & Jenny Thompson

07-Chuck & Elaine Eidenschink

#### **NORTH PRAIRIE**

##### ***Birthdays***

02-Kathy Mosdal

03-Lisa Anderson

04-Marlyn Bremmer

05-Jarred Mosdal

07-Gary Albrechtson

09-Barb Welsh

13-Matthew Holtegaard

17-Nicole Greenwell

18-Ashley Bue

23-Anita Brown

23-Tara Cassman

23-Dustin Haug

23-Jessica Honsey

23-Ashton Lorenz

27-Joey Bradley

27-Joe Lorenz

29-Terry Hatlevig

##### ***Anniversaries***

05-Jed & Jolene Williams

05-Donald & Diane Eide

07-Nathan & Jessica Honsey

09-Austyn & Indra Neldner

13-Tony & Caitlin Russell

14-Creighton & Silke Horihan

15-Chris & Jennifer Olson

15-Dalton & Courtney Eide

17-Justin & Jessica Bell

31-Roger & Annette Bradley

#### **PILOT MOUND**

##### ***Birthdays***

05-Hailey Stevens

06-Linda Danielson

07-Tammy McCabe

08-Ed Kesler

08-Shirley Lien

09-Kim Horsman

09-Brandon Schaefer

10-Elizabeth Horsman

10-Eugene Kesler

10-Tim Kesler

11-Justin Slavin

15-Sтивен Huper

16-David McCabe

17-Dean McConochie

20-Justin Dahl

21-Jane Kesler

25-Gary Strande

27-Joshua Stevens

28-Thea Kennedy

##### ***Anniversaries***

06-Danny & Rachel Dahl

08-Kevin & Sherry Horsman

09-Tom & Deb Haugstad

19-Tim & Jody Lawstuen

20-Ryker & Lena Bergo

25-Kevin Weatherly & Kery Jo Erickson

29-Troy & Laurie Danielson

The Birthday/Anniversary lists are not complete.

Please help us keep accurate lists of these special days for our members

Any updates/corrections should be sent to [united\\_lutheran@yahoo.com](mailto:united_lutheran@yahoo.com)

## July 2023

| Sun                                                                                                                                       | Mon                                                                                                                                                                                               | Tue                                          | Wed                                                                               | Thu                                                                                                | Fri       | Sat                                        |
|-------------------------------------------------------------------------------------------------------------------------------------------|---------------------------------------------------------------------------------------------------------------------------------------------------------------------------------------------------|----------------------------------------------|-----------------------------------------------------------------------------------|----------------------------------------------------------------------------------------------------|-----------|--------------------------------------------|
|                                                          | <b>ALL WORSHIP CANCELLATIONS</b> will be posted on KTTC TV as “United Lutheran Parish” and also on Facebook pages Contact officers for meeting updates Calendar events will be reviewed regularly |                                              |                                                                                   |                                                                                                    |           | <b>1</b><br>Pastor on Vacation – July 1-13 |
|                                                                                                                                           |                                                                                                                                                                                                   |                                              |                                                                                   |                                                                                                    |           |                                            |
| <b>2</b> Worship<br>9:00 AM<br>Pilot Mound<br>10:30 AM<br>North Prairie                                                                   | <b>3</b>                                                                                                                                                                                          | <b>4</b>                                     | <b>5</b>                                                                          | <b>6</b>                                                                                           | <b>7</b>  | <b>8</b>                                   |
| <b>9</b> Worship<br>9:00 AM<br>Grace<br>10:30 AM<br>Arendahl                                                                              | <b>10</b><br>6:00PM<br>NP Foundation meeting                                                                                                                                                      | <b>11</b><br>6:00 PM<br>NP WELCA<br>Quilting | <b>12</b><br>9:00AM<br>NP WELCA<br>Quilting, Potluck<br>9:00 AM<br>Grace Quilting | <b>13</b>                                                                                          | <b>14</b> | <b>15</b>                                  |
| <b>16</b> Worship<br>9:00 AM<br>Pilot Mound<br>10:30 AM<br>North Prairie<br>6:00 pm PM Ice Cream Social,<br>7:00pm Music<br>6:00 pm Grace | <b>17</b>                                                                                                                                                                                         | <b>18</b>                                    | <b>19</b>                                                                         | <b>20</b><br>2:00PM Grace<br>WELCA mtg                                                             | <b>21</b> | <b>22</b>                                  |
| <b>23</b> Worship<br>9:00 AM<br>Grace<br>10:30 AM<br>Arendahl                                                                             | <b>24</b>                                                                                                                                                                                         | <b>25</b>                                    | <b>26</b><br>9:00 AM<br>Grace Quilting                                            | <b>27</b><br>7:00-8:00 pm<br>Pastor Sarah's at "Dusk" Zoom Book Club –<br>1776 by David Mccullough | <b>28</b> | <b>29</b>                                  |
| <b>30</b> Worship<br>9:00 AM<br>Pilot Mound<br>10:30 AM<br>North Prairie<br>10:30 am – 3:00 pm ULP – VBS at North Prairie                 | <b>31</b>                                                                                                                                                                                         |                                              |                                                                                   |                                                                                                    |           |                                            |



## August 2023

| Sun                                                                                                                                                                                                                                        | Mon | Tue                                     | Wed                                                 | Thu                                                                                                                         | Fri | Sat |
|--------------------------------------------------------------------------------------------------------------------------------------------------------------------------------------------------------------------------------------------|-----|-----------------------------------------|-----------------------------------------------------|-----------------------------------------------------------------------------------------------------------------------------|-----|-----|
|                                                                                                                                                                                                                                            |     | 1                                       | 2                                                   | 3                                                                                                                           | 4   | 5   |
| <b>6</b> Worship<br>9:00 AM<br>Grace<br>10:30 AM<br>Arendahl<br>following<br>Fjaerland<br>Reunion                                                                                                                                          | 7   | <b>8</b><br>6:00PM NP<br>WELCA Quilting | <b>9</b><br>9:00AM<br>NP WELCA<br>Quilting, Potluck | 10                                                                                                                          | 11  | 12  |
| <b>13</b> Worship<br>9:00 AM<br>Pilot Mound<br>10:30 AM<br>North Prairie<br>9:30 am NP<br>WELCA Meeting<br>10:30 am<br>Worship at<br>North Prairie<br>ULP meeting<br>following<br>worship<br>6:00 pm Grace<br>Supper/Song;<br>music @ 7:00 | 14  | 15                                      | <b>16</b><br>NEWSLETTER<br>(Sept) DEADLINE          | 17                                                                                                                          | 18  | 19  |
| <b>20</b> Worship<br>9:00 AM<br>Grace<br>10:30 AM<br>Arendahl                                                                                                                                                                              | 21  | 22                                      | 23                                                  | <b>24</b><br>7:00-8:00 pm<br>Pastor Sarah's at<br>"Dusk" Zoom<br>Book Club –Olga<br>Dies<br>Dreaming by<br>Xochitl Gonzales | 25  | 26  |
| <b>27</b> Worship<br>9:00 AM<br>Pilot Mound<br>10:30 AM<br>North Prairie<br>2:00 pm Brad<br>Boice Concert,<br>hosted by ULP<br>at NP Pavilion                                                                                              | 28  | 29                                      | 30                                                  | 31                                                                                                                          |     |     |

**THE MESSENGER NEWSLETTER**  
Arendahl-Grace-North Prairie-Pilot Mound  
United Lutheran Parish  
P. O. Box 36  
Peterson, MN 55962

Non-Profit  
U. S. Postage Paid  
Peterson, MN 55962  
Permit #4

